

Pathway

FOR THE **Future**



Anne Carlsson

Nurturing abilities. Changing lives.

Our Mission

To make the world a more inclusive place where independence is a gift to all

Vision for Pathways Campus

We envision creating an environment that is home-like and family-friendly giving the individuals we serve and their families the privacy they deserve.

To provide space to accommodate and empower individuals with all abilities, focused on individuality and independence

To provide the students we serve a quality, individualized education

To provide our teachers and staff an enriched environment that supports their team approach to educating students, with integrated therapy and robust assistive technology

To provide innovative and progressive therapy equipment and space for our evidence based clinical and therapeutic programming



Anne Larsen

Nurturing abilities. Changing lives.

Our Core Values

Acceptance

We believe in honoring the dignity and worth of others and celebrating the differences in others.

Compassion

Compassion is more than just what is in your heart. We must demonstrate care and respect through words and actions and show empathy for others.

Gratitude

True gratitude requires the ability to appreciate others and the work that is before us.

Life-Long Learning

It is imperative that our team encourages learning opportunities for those we serve and one another.

Service Above Self

Providing person-centered service that creates a meaningful impact on those we serve and others.

Holistic Encouragement

We recognize the complexity of supporting a person's life in its entirety. We seek to nurture all facets of human life, including mind, body and spirit.

Teamwork

With a cooperative spirit, we seek to enhance the well-being of those we serve through our time, energy and love.

MESSAGE

Message from Tim Eissinger, CEO, Anne Carlsen



TIM EISSINGER
CHIEF EXECUTIVE OFFICER

Greetings and thank you for your interest in our “Pathway for the Future” campaign! This campaign will create a new, innovative and high-profile facility for Anne Carlsen in Jamestown, and will serve people from all across the State of North Dakota. Our current facility, on the banks of the James River, has served us well for over 80 years. As the needs of those we’ve served became more diverse and challenging, the visioning process began in designing a facility that could even more positively impact the lives of the those we serve and their families. To realize this vision, we have undertaken the largest fundraising campaign in our history. I am happy to share with you that the response has been overwhelming! But our mission is not yet complete.

Even as we prepare for construction, we continue to look towards our generous family of supporters and friends from across the state to help us make this dream a reality. We are not letting global health or economic challenges stand in our way. Dr. Anne taught us that adversity is often a part of life, yet if you believe strongly in something, you still possess the power to make it happen. We are 110% committed to making this project a reality!

If you have already made a gift, thank you. I would encourage you to consider additional support. If you have yet to partner with us, please do so by contacting any of our dedicated team listed on the back of this publication. We would welcome you to join us in building a “Pathway for the Future” for generations of children.

Thank you, and as our capital campaign co-chair, Harvey Huber, signs off on all his communications...ONWARD!

All the best,

Tim Eissinger
Chief Executive Officer
Anne Carlsen

Pathways Campus Solutions

At the Anne Carlsen Center we offer a wide array of services and supports that allow us to uniquely tailor each treatment plan to the specific needs of each individual and their family. The Pathways Campus will improve those services by enhancing every facet of the environment in which care, education and therapy are provided.

Private Rooms - Many of the individuals we serve have complex medical issues requiring medical and specialized adaptive equipment. Currently, rooms have up to three individuals in them. The private rooms will provide easier access to the equipment for the staff and more of a feeling of independence for the individual. While at the center this room is their home and we want individuals to enjoy the space and make it feel like their own.

Educational Classrooms - Learning today is heavily technology dependent. When the current facility was built, today's technologies were still in the realm of science fiction. Today's technology enhances communication, the classroom experience and educational outcomes in very profound ways. The new campus infrastructure will support new technological innovations and updates for generations to come.

Recreational Areas - Multiple common spaces and recreational areas will allow the individuals we serve many unique opportunities to interact, socialize and exercise with peers, their families, and staff. Events like graduation, Halloween parties and others will be so much more engaging and enjoyable on the new campus.

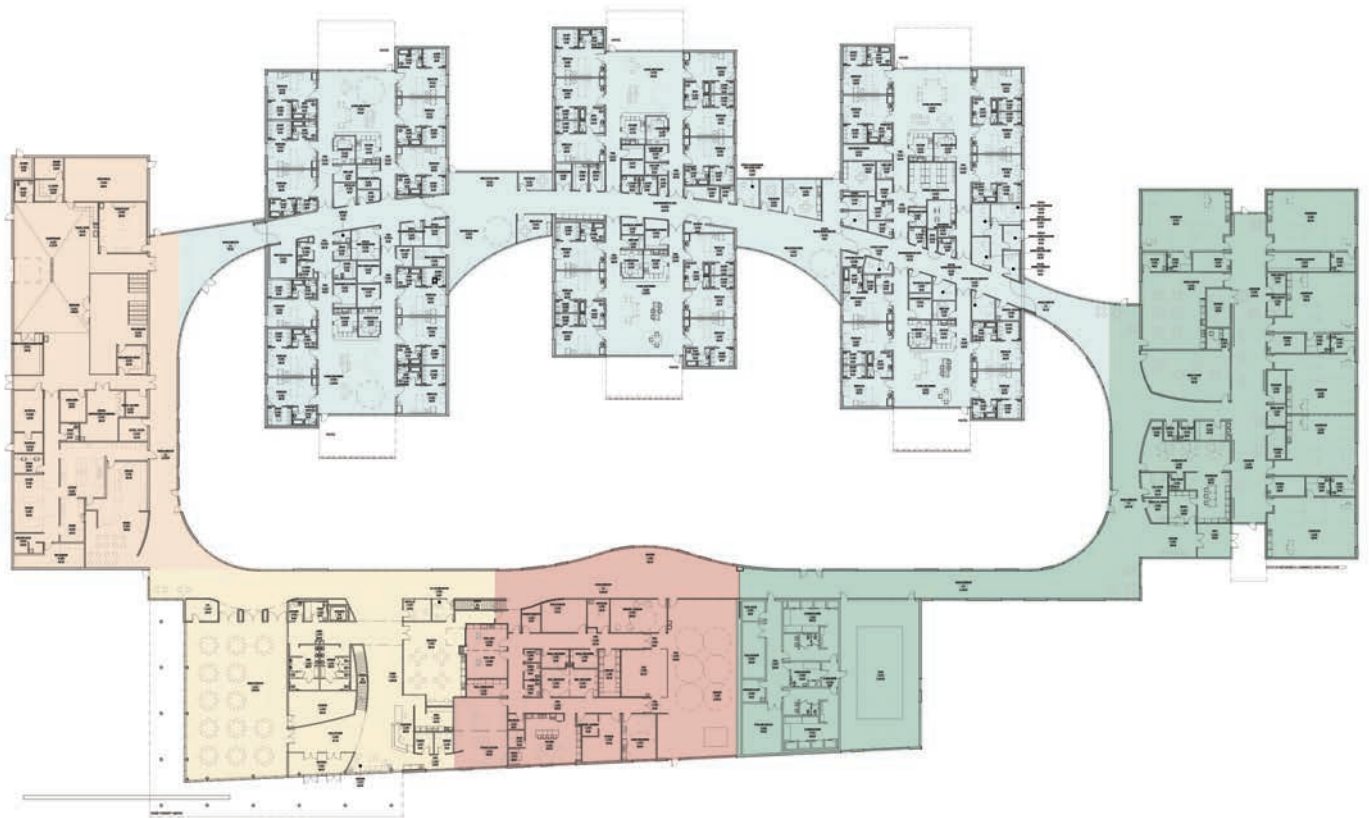
Therapy - A new therapy pool, an enlarged indoor therapeutic/play area, and an outside (contained) play area will provide those we support and their staff with innovative, safe, and fun options to provide therapy and entertainment. In addition, the new facility has a built-in "track" connecting all areas of the campus and allowing for easy transitions for those we serve ... and a great walkway during the winter.

Environment - This campus will assist in providing the best outcomes for those we serve. An upgrade of the current facility was not possible because there would have been no place capable of serving our medically complex individuals during a full-scale remodel. The Pathways Campus will meet the expectations of our families, their children, our community, and our dedicated staff.



"One of the toughest decisions a family makes is for their child to live outside of their home. It is heartbreaking each time you have to say goodbye, but seeing your child show progress, and grow in ways you could never imagine, brings comfort and helps ease that heartbreak. My grandson has shown major improvements in his ability to communicate with us because of the high-level care he receives from the dedicated teachers and staff at Anne Carlsen Center. Currently, he shares a room with two older boys so privacy becomes difficult. I believe by building a new center where children can have their own rooms will make it more like home and enhance our grandson's quality of life. And for me, it will make saying the goodbye part of the visits just a bit easier."

Bob, Parker's grandpa

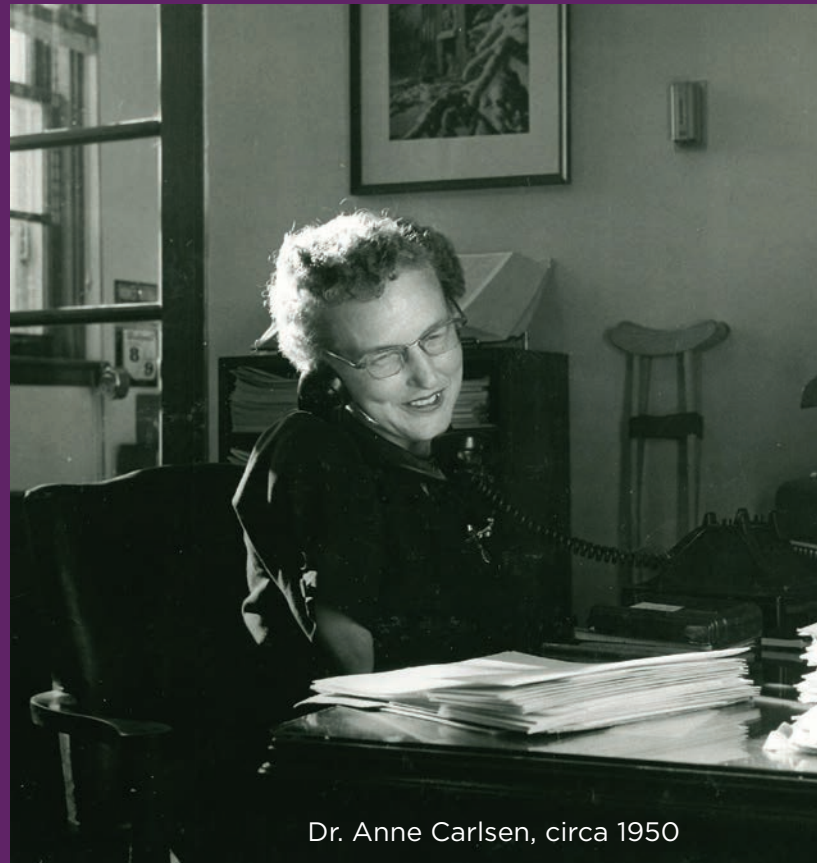


Campus Floorplan

Our History

Our namesake, Dr. Anne Carlsen, was born without forearms or lower legs. She refused to let her physical impairments prevent her from living life to its fullest. Dr. Anne had a vision of helping others enjoy greater independence and quality of life. In 1940, that vision began to take shape with the construction of the then named "Crippled Children's School" in Jamestown, ND. The school opened its doors to 18 students on September 22, 1941. Dr. Anne served as a teacher, administrator and mentor for the Anne Carlsen Center, touching many lives with her compassion, courage and determination.

Today, our clients have far more complex physical, behavioral and learning needs and we have grown from a regional hub to a statewide presence. From serving 18 children when we first opened our doors in 1941, to now nurturing the abilities of over 3,000 individuals, we have grown to meet the needs of our communities.



Dr. Anne Carlsen, circa 1950

Statewide Impact

